

Ceylon Government Gazette

Published by Authority.

No. 6,225 — FRIDAY, JANUARY 17, 1908.

PART I.—General: Minutes, Proclamations, Appointments, and General Government Notifications. PART II.—Legal and Judicial. PART III.—Provincial Administration. PART IV.—Land Settlement. PART V.—Mercantile, Marine, Municipal, Local, &c.

Separate paging is given to each Part in order that it may be filed separately.

Part IV.—Land Settlement.

	PAGE		PAGE
Preliminary Notices	9	Final Orders.. .. .	—

PRELIMINARY NOTICES.

Notice under "The Waste Lands Ordinances of 1897, 1899, 1900, and 1903."

TAKE notice that unless within three months from January 17, 1908, the persons, if any, who claim any interest in the lands hereinafter mentioned or in any one or more of such lands or to some interest therein make claim in person or in writing to the said lands or any of them or to some interest therein to J. G. Fraser, Esq., Special Officer appointed under section 28 of "The Waste Lands Ordinances, 1897, 1899, 1900, and 1903," at his office at Hill House, Mutwal, Colombo:

Such Special Officer, in pursuance of the powers vested in him by the said Ordinances, will declare by writing under his hand that the said lands or such of them, as to which no claim has been made, are the property of the Crown.

J. G. FRASER,
[Special Officer,

Description of the Lands referred to.

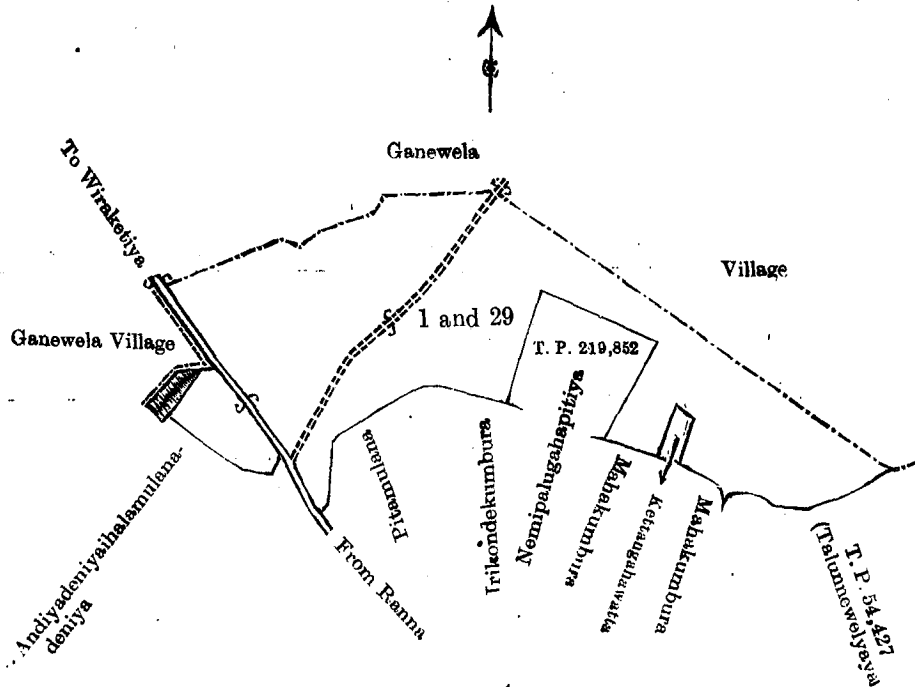
The following lots situated in the village of Talunna, in the West Giruwa pattu of the Hambantota District, in the Southern Province, as described in the annexed certified tracings:—

I.

Preliminary plan 257.

Lot.	Name of Land.	Extent. A. R. P.
1 ..	Siyambalagahahena, Ketangahahena, Andiyadeniyebbedderoda, Inginiyangahahena	16 1 38
20 ..	Andiyadeniyehena	1 0 0
		<hr/> 17 1 38 <hr/>

and bounded as follows : on the north and east by the village limit of Ganewela ; on the south by T. P. 54,427 (Talunnewelyaya), Mahakumbura claimed by Puhulle Hewagamage Peneris, Ketangahawatta belonging to the Crown, Mahakumbura claimed by Puhulle Hewagamage Peneris, T. P. 219,852 (Nemipalugahapitiya), Irikondekumbura claimed by Puhulle Hewagamage Peneris, Pitamulana claimed by ditto ; on the west by the minor road from Ranna to Wiraketiya, Andiyadeniye Ihalamulanedeniya claimed by Pallekaduwe Abeywarna Patabendige Ando Appu, the village limit of Ganewela.



Scale of 8 Chains to an Inch.

Situation : Talunna village in West Giruwa pattu of Hambantota District.

Preliminary plan 257.

Lot.	Name of Land.	Extent.		
		A.	R.	P.
1	Siyambalagahahena, Ketangahahena, Andiyadeniyebedderoda, Inginiyangahahena	16	1	38
29	Andiyadeniyehena	1	0	0
		<u>17</u>	<u>1</u>	<u>38</u>

Field sheet P¹⁶₂₁₋₂₉

Surveyor-General's Office,
Colombo, October 31, 1907.

J. B. M. RIDOUT,
for Surveyor-General.

II.

Preliminary plan 257.

Lot.	Name of Land.	Extent.		
		A.	R.	P.
7	Ambagahahena	5	2	18
12	Ketangahahena	0	0	10
13	Ketangahahena, Maragahahena	8	3	32
14	Bogahawattahena	0	0	28
25	Galahena, Lolugahahena, Kongahawalkanatta	85	0	9
26	Ganekumburedeniya	0	0	28
27	Bogahayaya, Demata-attearehena, Kongahahena, Diulgahakoratuwa, Lolugahahena, Naduyaya, Mahayaya, &c.	184	2	35
28	Demata-attearewewa	2	0	28
36	Lolugahahena (P. P. 6,356/16,798)	0	0	13
		<u>287</u>	<u>0</u>	<u>1</u>

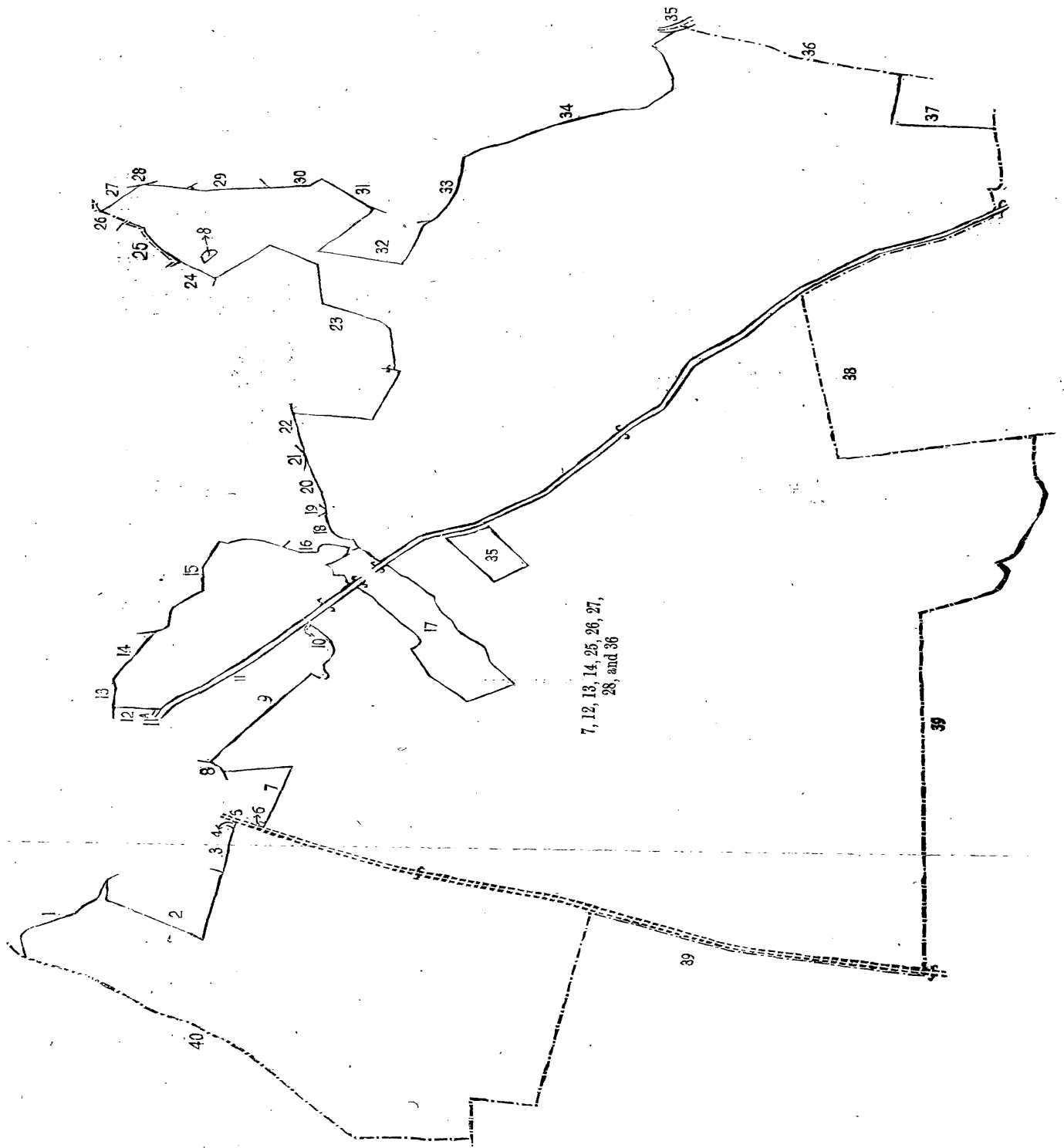
and bounded as follows: on the north by Andiyadeniya and Ihalamulenedeniya claimed by Pallikkaduwe Abeywana Patabendige Ando Appu, T. P. 219,860 (Kongahahena), T. P. 240,681 (Kongahahena), a reservation for the Gansabhawa road, the Gansabhawa road to Pattiyapola, a reservation for the Gansabhawa road, T. P. 209,171 (Diulgahakoratuwa), T. P. 209,170 (Hikgahakoratuwa), T. P. 219,861 (Kongahakoratuwa and Julgahakoratuwa), a reservation for the minor road, the minor road from Ranna to Wiraketiya, a reservation for the minor road, T. P. 209,172 (Siyambalagahakoratuwa), Irikondekumbura claimed by Fuhullele Hewagamage Peneris, Mahakumbura claimed by ditto, T. P. 54,427 (Talunnawelyaya), Mahawelakumbura *alias* Dangahamulana claimed by Madduma Mahatmaya Wickramasingha of Tangalla, Talunneniya claimed by Alut Patabendige Daniya, Mahawelakumbura *alias* Dangahamulana claimed by Madduma Mahatmaya Wickramasingha of Tangalla, T. P. 54,427, Talunnewelyaya, (encroachment by Madduma Mahatmaya Wickramasingha), T. P. 54,427, Talunnewelyaya (encroachment by Madduma Mahatmaya Wickramasingha), Lolugahahena belonging to the Crown, Pimmulana claimed by Kadiragoda Pansala, the village limit of Ganewela, the village limit of Andupelena; on the east by Migahakoratuwa claimed by Vidana Patirana Don Disanhamy, Siyambalagahawatta claimed by ditto, Siyambalagahahena claimed by ditto, Andragodakumbura claimed by Dissanayaka Mohotti Basnayaka Nilame, Mullekumbura claimed by Senarat Arachchige Don Odris, T. P. 209,516 (Hikgahawatta), Mullekumbura claimed by Senarat Arachchige Don Odris, Andragodakumbura claimed by Dissanayaka Mohotti Basnayaka Nilame, the Urubokka-oya, the village limit of Wigamuwa, Mailagahahena sold by the Crown to Abraham Samarawickrama Dahanayaka (T. P. 240,774); on the south by the village limit of Wigamuwa, the village limit of Pattiyapola; on the west by the village limit of Pattiyapola, the village limit of Ganewela.

NOTE.—The following lots lying within the above boundaries are excluded from this notice, and their aggregate acreage of 1 acre and 2 perches is not included in the acreage of 287 acres and 1 perch given above:—

Preliminary plan 257.

Lot.	Name of Land.	Extent.		
		A.	R.	P.
8	Ambagahawatta	0	0	6
35	Lolugahahena (T. P. 208,674)	0	3	36
		<u>1</u>	<u>0</u>	<u>2</u>

[For Tracing see page 12.]



7, 12, 13, 14, 25, 26, 27,
28, and 36

Scale of 8 Chains to an Inch.

Reference to Boundaries.

- | | | | |
|-----|---|----|------------------------------|
| 1 | Andiyadeniya, Ihalemulanadeniya | 20 | Talunnewolyaya |
| 2 | T. P. 219,860 (Kongahahena) | 21 | T. P. 54,427 |
| 3 | T. P. 240,681 (Kongahahena) | 22 | Talunnewolyaya |
| 4 | Reservation for Gansabhawa road | 23 | Lolugahahena |
| 5 | Gansabhawa road to Pattiyapola | 24 | Pinmulana |
| 6 | Reservation for Gansabhawa road | 25 | Village limit of Ganewela |
| 7 | T. P. 209,171 (Diulgahakoratuwa) | 26 | Village limit of Andupelana |
| 8 | T. P. 209,170 (Hikgahakoratuwa) | 27 | Migahakoratuwa |
| 9 | T. P. 219,861 (Kotangahakoratuwa and Julgahakoratuwa) | 28 | Siyambalagahawatta |
| 10 | Reservation for minor road | 29 | Siyambalagahahena |
| 11 | Minor road from Ranna to Wiraketiya | 30 | Andregodakumbura |
| 11a | Reservation for minor road | 31 | Mullekumbura |
| 12 | T. P. 209,172 (Siyambalagahakoratuwa) | 32 | T. P. 209,566 (Hikgahawatta) |
| 13 | Irikondokumbura | 33 | Mullekumbura |
| 14 | Mahakumbura | 34 | Andregodakumbura |
| 15 | T. P. 54,427 (Talunnewolyaya) | 35 | Urabokka-oya |
| 16 | Mahawelakumbura <i>alias</i> Dangahamulana | 36 | Village limit Wigamuwa |
| 17 | Talunneniya (T. P. 133,854) | 37 | Mailagahahena |
| 18 | Mahawelakumbura <i>alias</i> Dangahamulana | 38 | Village limit of Wigamuwa |
| 19 | T. P. 54,427 | 39 | Village limit of Pattiyapola |
| | | 40 | Village limit of Ganewela |

Situation: Talunna village in West Giruwa pattu of Hambantoto District.

Preliminary plan 257.

Lot.	Name of Land.	Extent.		
		A.	R.	P.
7	Ambagahahena	5	2	18
12	Ketangahahena	0	0	10
13	Ketangahahena, Maragahahena	8	3	32
14	Bogahawattehena	0	0	28
25	Galehena, Lolugahahena, Kongahawalakanatta	85	0	9
26	Ganekumburedeniya	0	0	28
27	Bogahayaya, Demata-attearehena, Kongahahena, Diulgahakoratuwa, Lolugahahena, Naduyaya, Mahayaya, &c.	184	2	35
28	Demata-attearewewa	2	0	28
36	Lolugahahena (P. P. 6,356/16,798)	0	0	13
		287	0	1

Lots excluded.

8	Ambagahawatta	0	0	6
35	Lolugahahena (T. P. 208,674)	0	3	36
		1	0	2

Sheets P¹⁶₂₁₋₂₉, P¹⁶₂₂₋₃₀, P¹⁶₃₇₋₄₅, and P¹⁶₃₈₋₄₆

Surveyor-General's Office,
Colombo, October 31, 1907.

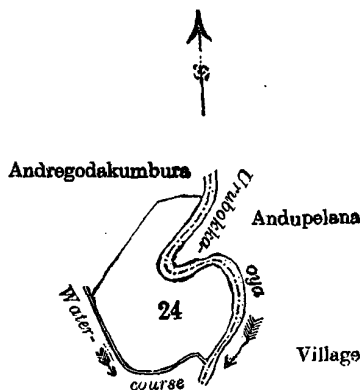
J. B. M. RIDOUT,
for Surveyor-General.

III.

Preliminary plan 257.

Lot.	Name of Land.	Extent.		
		A.	R.	P.
24	Julketiya	2	3	0

and bounded as follows: on the north by Andragodakumbura claimed by Dissanayaka Mohotti Basnayaka Nilame; on the east by the Urubokka-oya (the village limit of Andupelena); on the south by a water-course; on the west by a water-course, Andragodakumbura claimed by Dissanayaka Mohotti Basnayaka Nilame.



Scale of 8 Chains to an Inch.

Situation: Talunna village in West Giruwa pattu of Hambantota District.

Preliminary plan 257.

Lot.	Name of Land.	Extent.		
		A.	R.	P.
24	Julketiya	2	3	0

Field sheet P¹⁶₂₂₋₃₀

Surveyor-General's Office,
Colombo, October 31, 1907.

J. B. M. RIDOUT,
for Surveyor-General.
Hambantota S. O. 1-1908.

2,921