

ශ්‍රී ලංකා ප්‍රජාතාන්ත්‍රික සමාජවාදී ජනරජයේ ගැසට් පත්‍රය

අති විශේෂ

The Gazette of the Democratic Socialist Republic of Sri Lanka
EXTRAORDINARY

අංක 1956/13 - 2016 මාර්තු මස 01 වැනි අඟහරුවාදා - 2016.03.01
No. 1956/13 - TUESDAY MARCH 01, 2016

(Published by Authority)

PART I : SECTION (I) — GENERAL

Government Notifications

L.D.B. 9/73.

THE FAUNA AND FLORA PROTECTION ORDINANCE (CHAPTER 469)

Order under Sub-section (1) of Section 2

BY virtue of the powers vested in me by Sub-section (1) of Section 2 of the Fauna and Flora Protection Ordinance (Chapter 469) I, Gamini Jayawickrama Perera, Minister of Sustainable Development and Wildlife, do by this Order declare -

- (a) the area of State land described in the Schedule to this Order, to be a National Reserve for the purposes of the aforesaid Ordinance ; and
- (b) the aforesaid National Reserve comprising the area of land described in the Schedule hereto to be a Nature Reserve and that such Nature Reserve shall be called and known as the “Nagarkovil Nature Reserve”.

GAMINI JAYAWICKRAMA PERERA,
Minister of Sustainable Development
and Wildlife.

Colombo,
25th February, 2016.

SCHEDULE

Limits of the area of land comprising Nagarkovil Nature Reserve which is described in the map setout hereunder and bounded as follows :

All that area of state land comprising 7882 hectares demarcated as per the GPS coordinates mentioned below based on 1 : 50000 scale of the Survey Department obtained according to the coordinates structures of SLD 99 and situated within the Divisional Secretary’s Divisions of Wadamarachchi and Point Pedro in the Administrative District of Jaffna and Kilinochchi in the Northern Province and bounded as follows :



- North : From the starting point where coordinates E 137339 N 506145 are situated in the road B70 towards South-East up to the point where coordinates E 137935 N 506018 are situated ; from there towards North-East up to the point where coordinates E 139089 N 506658 are situated ; from there towards North-East up to the point where coordinates E 140755 N 507155 are situated in the road B68 ; from there towards South-East up to the point where coordinates E 141838 N 506236 are situated ; from there towards South up to the point where coordinates E 141871 N 504874 are situated ; from there towards South-East up to the point where coordinates E 142066 N 504790, E 142258 N 504662 , E 142534 N 504201, E 142732 N 503948 are situated ; from there towards South-East up to the point where coordinates E 142488 N 503775 are situated ; from there towards South-East up to the point E 142690 N 503600, E 142845 N 503424, E 143171 N 502880, E 143537 N 502425, E 144514 N 501657 are situated ; from there along the road meets towards South-East up to the point where coordinates E 145485 N 500891, E 146844 N 499529, E 147354 N 499056, E 148310 N 497833, E 148656 N 497499 are situated ; from there towards North-East up to the point where coordinates E 150845 N 499402 meets the coast ;
- East : From the last mentioned point along the coast towards South- East up to the point where coordinates E 154542 N 495071 are situated ; from there towards South-West up to the point where coordinates E 153190 N 493440 ; from there towards South-East up to the point where coordinates E 153727 N 492980 are situated ; from there towards South up to the point where coordinates E 153715 N 492800 are situated ; from there towards South-East up to the point where coordinates E 156152 N 491030 are situated ; from there towards East up to the point where coordinates E 156331 N 491059 are situated ; from there towards South-East up to the point where coordinates E 157809 N 489808, E 158174 N 489386, E 159115 N 488722 are situated ; from there up to the point where coordinates E 159593 N 488394 meets road ; from there along the said road towards South-East up to the point where coordinates E 162364 N 486558, E 164411 N 485035 are situated ;
- South : From the last mentioned point of above East boundary towards South- West up to the point where coordinates E 163939 N 484397 are situated ; from there towards North-West along the maximum water level of the lagoon up to the point where coordinates E 163456 N 484708, E 162071 N 485437, E 160958 N 486341, E 160138 N 486876, E 159451 N 487248, E 158231 N 488007 are situated ; from there up to the point where E 157843 N 488247 are situated on the road ; from there towards North-West E 155926 N 489171, E 153509 N 490350, E 152033 N 491630, E 150427 N 492923, E 148854 N 493908, E 147215 N 495254 are situated ;
- West : From the last mentioned point of the above South boundary towards North up to the point where coordinates E 147182 N 496415 are situated ; from there towards North-West up to the point where coordinates E 146420 N 497357 are situated ; from there along the maximum water level of the lagoon towards North west up to the point where coordinates E 144334 N 498866, E 143894 N 499176, E 142856 N 500074 are situated ; from there along the maximum water level of the lagoon towards North up to the point where coordinates E 142298, N 501279, E 141597, N 503292, E 141273, N 503948, E 141029, N 504633 are situated ; from there up to the point where coordinates E 140240, N 505000 meets road B 68; from there towards West up to the point where coordinates E 139470 N 504857, E 138058, N 505256 are situated ; from there towards South up to the point where coordinates E 137889, N 503894 are situated ; from there towards South-West up to the point where coordinates E 137206, N 503194 are situated ; from there towards North-West up to the point where coordinates E 136175, N 504335 meets road B 70 ; from there along the said road towards North-East up to the starting point where coordinates E 137339, N 506145 are situated



03-421/1

L.D.B. 9/73

THE FAUNA AND FLORA PROTECTION ORDINANCE (CHAPTER 469)

Order under Subsection (1) of Section 2

By virtue of the powers vested in me by Subsection (1) of Section 2 of the Fauna and Flora Protection Ordinance (Chapter 469) I, Gamini Jayawickrama Perera, Minister of Sustainable Development and Wildlife, do by this Order declare -

- (a) the area of State land described in the Schedule to this Order, to be a National Reserve for the purposes of the aforesaid Ordinance ; and
- (b) the aforesaid National Reserve comprising the area of land described in the Schedule hereto to be a Nature Reserve and that such Nature Reserve shall be called and known as the “Wedithalathive Nature Reserve”.

GAMINI JAYAWICKRAMA PERERA,
Minister of Sustainable Development
and Wildlife.

Colombo,
25th February 2016.

SCHEDULE

Limits of the area of land comprising Wedithalathive Nature Reserve which is described in the map set out hereunder and bounded as follows

All that area of land comprising 29180 hectares demarcated as per the GPS coordinates mentioned below based on 1 : 50000 scale of the Survey Department obtained according to the coordinates structures of Kandawala and situated within the District of Mannar in the Northern Province and bounded as follows :

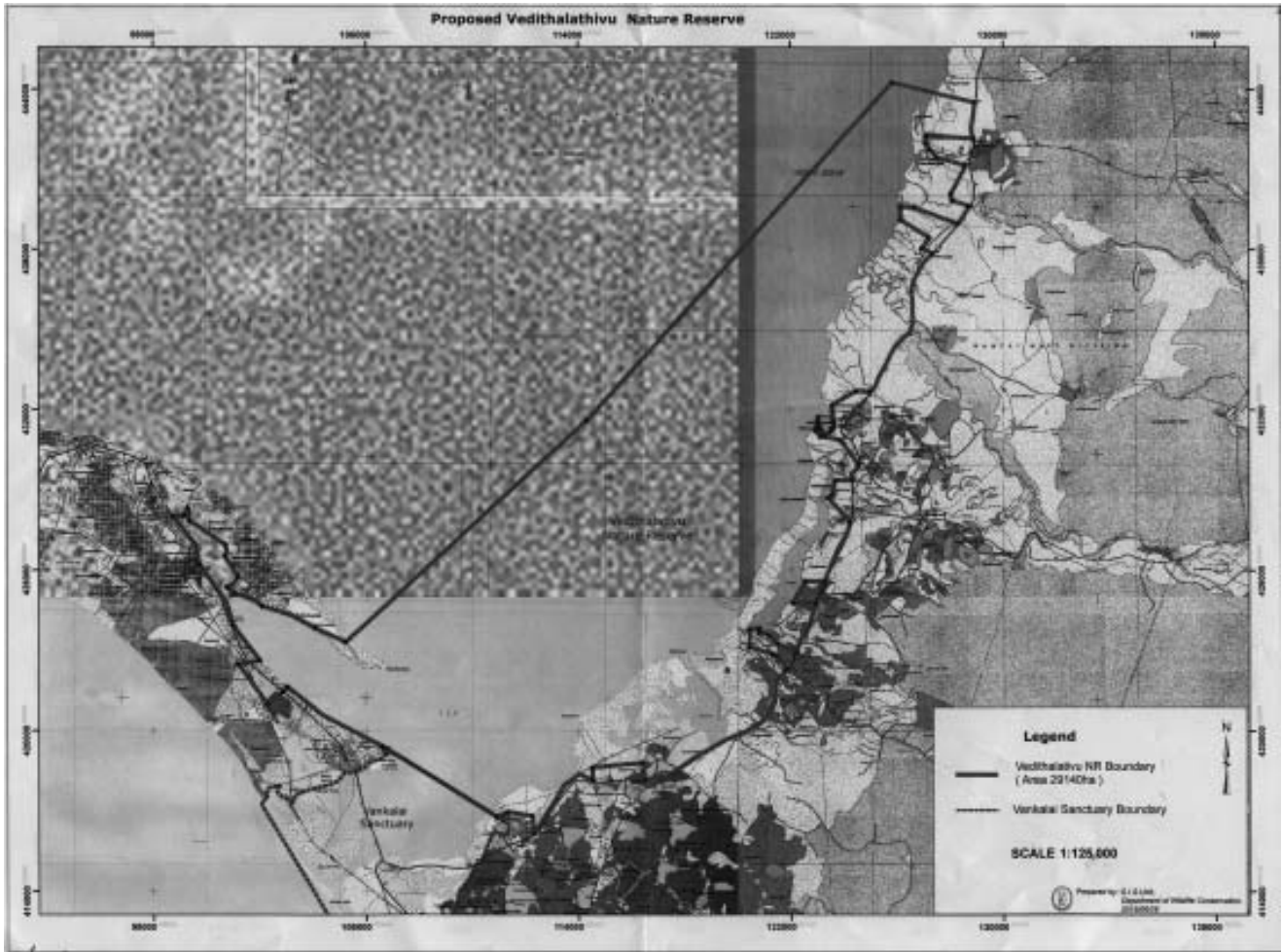
North : From the starting point of North boundary where coordinates E 98726 N 428000 are situated ; from there towards East up to the point where coordinates E 99169 N 428032 are situated ; from there up to the point where coordinates E 99300 N 428313 are situated within Northern side of maximum water level of the lagoon ; from there towards South-East up to the point where coordinates E 99366 N 427826 are situated within the maximum Water level of the lagoon; from there up to the point where coordinates E 100710 N 426947 are situated ; from there up to the point where coordinates E 100692 N 426517 are situated ; from there towards South-East up to the point where coordinates E 101184 N 425748 are situated ; from there up to the point where coordinates E 100750 N 425353 are situated above the maximum water level of the lagoon ; from there up to the point where coordinates E 101094 N 425106 are situated ; from there up to the point where coordinates E 102087 N 424634 are situated ; from there up to the point where coordinates E 104067 N 423835 are situated ; from there up to the point where coordinates E 105229 N 423300 are situated ; from there towards North-East up to the point where coordinates E 125819 N 444253 are situated in the sea ; from there up to the point where coordinates E 128948 N 443497 meets in the road A32.

East : From the last mentioned point in the North boundary towards South along the road A32 up to the point where coordinates E 128895 N 442136 are situated ; from there towards West up to the point where coordinates E 127138 N 442286 are situated ; from there towards South up to the point where coordinates E 127088 N 441981 are situated ; from there towards South-East up to the point where coordinates E 127247 N 441732 are situated ; from there up to the point where coordinates E 127500 N 441446 are situated ; from there towards South-East up to where coordinates E 128586 the point N 441134 are situated ; from there towards South-West up to the point where coordinates E 128037 N 440077 are situated ; from there up to the point where coordinates E 128084 N 439829 are situated ; from there towards East up to the point where coordinates E 128717 N 439610 meets the Road A32 ; from there towards South-West along the road A32 up to the point where coordinates E 128306 N 438955 are situated ; from there towards North-West up to the point where coordinates E 126649 N 439540 are situated ; from there up to the point where coordinates E 126131 N 439592 are situated ; from there towards South up to the point where coordinates E 126128 N 439100 are situated ; from the towards South-East up to the point where coordinates E 127227 N 438427 are situated ; from there towards South-West up to the point where coordinates E 126939 N 438028 are situated ; from there towards South-East up to the point where coordinates E 127365 N 437836 are situated near the road A32 ; from there along the road A32 towards South-West to the distance of 6 km up to the point where coordinates E 124982 N 432668 are situated ; from there towards West up to the point where coordinates E 124460 N 432688 are situated ; from there towards South-West up to the point where coordinates E 123546 N 432152 are situated ; from there towards South up to the point E 123572 N 431930 E 123627 N 431449 are situated in the traingulation point ; from there towards South up to the point where coordinates E 123614 N 431306 are situated near the Sea ; from there towards West up to the point where coordinates E 123521 N 431296 are situated ; from there towards South up to the point where coordinates E 123487 N 431155 are situated ; from there towards South-West up to the point where coordinates E 123257 N 431024 are situated ; from there towards North-West up to the point where coordinates E 123130

N 431256 are situated ; from there towards North-East up to the point where coordinates E 123061 N 431415 are situated ; from there towards North up to the point where coordinates E 123043 N 431528 are situated ; from there up to the point where coordinates E 123031 N 431715 are situated ; from there towards South up to the point where coordinates E 122979 N 431351 are situated ; from there up to the point where coordinates E 122932 N 431215 are situated near the coast ; from there towards South-East up to the point where coordinates E 123102 N 430990 are situated ; from there towards East up to the point where coordinates E 123847 N 430856 are situated ; from there towards South-East up to the point where coordinates E 124547 N 429932 meets road A32; from there along the road A32 towards South-West up to the point where coordinates E 124334 N 429338 are situated ; from there towards West up to the point where coordinates E 123659 N 429345 are situated ; from there towards South up to the point where coordinates E 123548 N 428802 are situated ; from there up to the point where coordinates E 123386 N 428700 are situated ; from there towards South-East up to the point where coordinates E 124240 N 427774 are situated near the road A32 ; from there along the road A32 up to the point where coordinates E 123251 N 425574 are situated ; from there towards West up to the point where coordinates E 122527 N 425571 are situated ; from there towards South-West up to the point where coordinates E 122064 N 424764 are situated ; from there towards East up to the point where coordinates E 122939 N 424757 are situated near the road A32 ; from there along the road A32 up to the point where coordinates E 122218 N 422912 are situated ; from there towards North-West up to the point where coordinates E 121486 N 423239 are situated ; from there up to the point where coordinates E 121161 N 423555 are situated ; from there towards West up to the point where coordinates E 120815 N 423660 are situated ; from there towards North up to the point where E 120804 N 423808 are situated ; from there towards West up to the point where coordinates E 120432 N 423772 are situated ; from there towards South up to the point where coordinates E 120413 N 423101 are situated ; from there towards East up to the point where coordinates E 121440 N 422809 are situated ; from there towards South-East up to the point where coordinates E 121871 N 422203 are situated in the Road A32.

South : From the last mentioned point of the above East boundary along the Road A32 up to the point where coordinates E 116523 N 418144 are situated ; from there towards North up to the point where coordinates E 116406 N 418794 are situated ; from there towards West up to the point where coordinates E 114506 N 418618 are situated ; from there towards South up to the point where coordinates E 114510 N 418128 are situated near the Road A32 ; from there along the Road A32 up to the point where coordinates E 112306 N 416132 are situated ; from there towards North up to the point where coordinates E 112235 N 416798 are situated ; from there towards West up to the point where coordinates E 111327 N 416952 are situated ; from there towards South-West up to the point where coordinates E 110896 N 416778 meets the boundary of Vankalai Sanctuary ; from there towards North-West up to the point where coordinates E 106607 N 419404 are situated ; from there towards North-West up to the point where coordinates E 103017 N 421638 are situated near the lagoon ; from there towards South-West up to the point where coordinates E 102858 N 421433 are situated near the Road A 14 ; from there up to the point where coordinates E 102289 N 420973 are situated near the railway line ;

West : From the last mentioned point of the above South boundary along the railway line towards North-West up to the point where coordinates E 101179 N 422482 are situated ; from there towards East up to the point where coordinates E 101986 N 422610 are situated ; from there along the Road A14 towards North-West up to the point where coordinates E 100970 N 423946 are situated ; from there up to the point where coordinates E 99720 N 426220 are situated ; from there up to the starting point where coordinates E 98726 N 428000 are situated in the Road A 14. ;



03-421/2