

# Ceylon Government Gazette

Published by Authority.

No. 5,672—FRIDAY, JANUARY 19, 1900.

PART I.—General: Minutes, Proclamations, Appointments,  
and General Government Notifications.

PART II.—Legal and Judicial.

PART III.—Provincial Administration.

PART IV.—Marine and Mercantile.

PART V.—Municipal and Local.

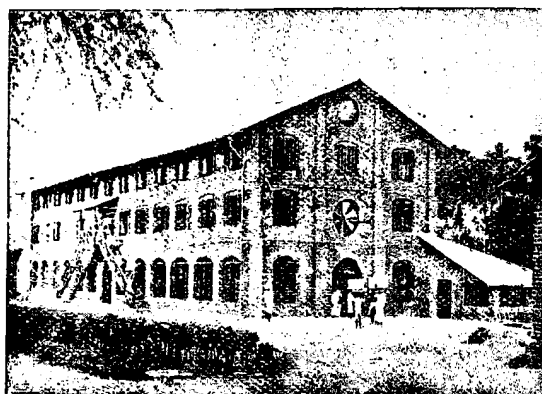
*Separate paging is given to each Part in order that it may be filed separately.*

## Part IV.—Marine and Mercantile.

|  | PAGE |                                  | PAGE |
|--|------|----------------------------------|------|
| Notices to Mariners ... ..                           | 12   | Railway Traffic Returns ... ..   | 11   |
| Notifications of Quarantine ... ..                   | —    | Trade Marks Notifications ... .. | 11   |
| Returns of Imports, Exports, and Bonded Goods ... .. | 14   |                                  |      |

## TRADE MARKS NOTIFICATIONS.

IN compliance with the provisions of "The Trade Marks Ordinances, 1888 and 1890," and the Regulations made on March 28, 1889, notice is hereby given that the Colombo Commercial Company, Limited, of Colombo, Ceylon, Merchants, have applied for the registration of the following Trade Mark in Class 42 in respect of Tea, Coffee, Cocoa, and other produce in their name, in the Classification of Goods in the above-mentioned Regulations:—



COLOMBO COMMERCIAL COMPANY, LIMITED.

Colonial Secretary's Office,  
Colombo, January 4, 1900.

E. NOEL WALKER,  
Colonial Secretary.

N.B.—The essential particulars of the Trade Mark are the distinctive device as above and the words "Colombo Commercial Company, Limited," and the applicants disclaim any right to the exclusive use of the added matter.

## NOTICES TO MARINERS.

HIS EXCELLENCY THE GOVERNOR has been pleased to direct that the following Notices to Mariners be published for general information.

By His Excellency's command,

E. NOEL WALKER,  
Colonial Secretary.

Colonial Secretary's Office,  
Colombo, January 12, 1900.

## BENGAL.—No. 249.

*Pacific Ocean—The Philippines—Luzon—Samur Island—  
A Rocky Islet to the North-Westward.*

The British Admiralty has given notice (No. 750 of 1899) of the existence of a rocky islet situated about 3½ miles north-westward of Samur island, north-east coast of Luzon; a reef of rocks, some of which are awash at low water, extends 1½ mile eastward of the islet, the sea breaking over the reef. Two soundings of 27 and 21 fathoms were obtained between this islet and Samur island.

Approximate position: lat 14° 34' N., long. 122° 40' E.

This notice affects the following Admiralty Charts:—  
Philippine islands, No. 943; between St. Bernardino and Mindoro straits, No. 2,577; also Eastern Archipelago,

Part I., 1890, page 338; and Revised Supplement, 1898, relating to that work, page 68.

P. J. FALLE, Comdr., R.I.M.,  
Port Officer of Calcutta.

Calcutta, December 22, 1899.

## BENGAL—No. 250.

*Eastern Archipelago—Celebes—Cape Besar—A Reef  
to the Eastward.*

The British Admiralty has given notice (No. 757 of 1899) of the existence of a reef with a least depth of 2 fathoms over it, about 8 miles eastward of cape Besar; it is situated with the west extreme of Bungkiel island bearing N. 20° W., distance 4½ miles, and north extreme of cape Besar S. 84° W.

This reef is about 500 yards long, east and west, and 300 yards broad, the water being discoloured.

Approximate position: lat. 0° 59' N., long. 123° 8' E.  
Variation, 2° easterly in 1899.

This notice affects the following Admiralty Chart:—  
Eastern Archipelago, No. 942a; also Eastern Archipelago, Part II., 1893, page 383

P. J. FALLE, Comdr., R.I.M.,  
Port Officer of Calcutta.

Calcutta, December 22, 1899.

THE under-mentioned Goods having been left in the Queen's Warehouse beyond the time allowed by Law, notice is hereby given that, unless the same be immediately cleared or bonded, they will be sold by public auction on Saturday, February 3, 1900, at 12 noon:—

| Report No. and Date. | Vessels.          | Marks.   | Description of Goods.     |
|----------------------|-------------------|--|---------------------------|
| 1899.                |                   |  |                           |
| 262 of May 29        | ss. Nairung       | G A & Co, 4,428 in a diamond                       | 1 crate empty bottles     |
| 273 of May 31        | ss. Goorkha       | 1 in a triangle                                    | 1 piece iron              |
| 265 of May 31        | ss. Vita          | E A  | 1 case cigars             |
| 196 of June 10       | ss. Patroclus     | C J T C  | 3 pieces timber           |
| 209 of August 15     | ss. Sirdhana      | Various  | 20 bags rice              |
| 209 of August 15     | do.               | C M S & Co   | 1 bag bran                |
| 269 of August 26     | ss. Maria Valerie | Zainudeen  | 1 parcel nails            |
| 207 of August 17     | ss. Rajapootana   | K C T in a triangle                                | 1 bag grain               |
| 207 of August 17     | do.               | 13, C J  | 1 bag paddy               |
| 207 of August 17     | do.               | D & M, B R   | 1 bag rice                |
| 207 of August 17     | do.               | Nil  | 4 bags rice               |
| 207 of August 17     | do.               | V T  | 2 bags grain              |
| 198 of August 11     | ss. Kohinur       | D & M, B R   | 1 bag rice                |
| 375 of September 21  | ss. Rewa          | Nil  | 1 bundle iron             |
| 90 of September 11   | Sagool Hameed     | O V 8  | 1 bag grey mule twist     |
| 239 of August 21     | ss. Hohenfels     | A R 2 in a triangle                                | 1 case merchandise        |
| 417 of September 28  | ss. Nadir         | Nil  | 1 bundle F. seed          |
| 294 of September 1   | ss. India         | G F & Co in a diamond or diamond, care of G Frazer | 1 package tents           |
| 294 of September 1   | do.               | M M  | 1 bag sweepings           |
| 294 of September 1   | do.               | T A M  | 11 cases sulphur          |
| 306 of September 4   | ss. Culna         | S P  | 1 bag coriander seed      |
| 306 of September 4   | do.               | N R  | 2 bags paddy              |
| 306 of September 4   | do.               | H M Galle  | 3 bags gram               |
| 263 of September 18  | ss. Rajapootana   | D  | 1 keg nails               |
| 69 of October 17     | ss. Braunfels     | H, C in a star                                     | 1 case hardware           |
| 69 of October 17     | do.               | N  | 1 case whisky             |
| 417 of September 27  | ss. Nadir         | C P H  | 1 bag cotton seed         |
| Unknown              | Unknown           | Nil  | 1 bundle crowbars         |
| 409 of June 28       | ss. Shropshire    | Nil  | 1 bag grain               |
| Unknown              | Unknown           | Nil  | 1 case hardware           |
| Do.                  | do.               | Nil  | 4 pieces timber           |
| Do.                  | do.               | Nil  | 4 barrels cement, ½ empty |

H. M. Customs,  
Colombo, January 15, 1900.

W. H. JACKSON,  
for Principal Collector.

THE under-mentioned Goods having being left in the under-mentioned Warehouses beyond the time allowed by Law, notice is hereby given that, unless the same are immediately cleared or bonded, they will be sold by public auction on Saturday, February 10, 1900, at noon:—

| Date.                          | Entry Number and Date | Vessel.          | Whence.       | Marks,                        | Goods.               |
|--------------------------------|-----------------------|------------------|---------------|-------------------------------|----------------------|
| <b>No. 5 BONDED WAREHOUSE.</b> |                       |                  |               |                               |                      |
| 1898.                          | 1898.                 |                  |               |                               |                      |
| May 26                         | 2,140 of June 23      | Lancashire ...   | Rangoon ...   | Nil                           | 14 bags              |
| November 2                     | 1,206 of November 17  | Valetta ...      | London ...    | C F Bernard                   | 1 crate              |
| <b>1899.</b>                   |                       |                  |               |                               |                      |
| February 18                    | 608 of April 7        | Chusan ...       | Calcutta ...  | Nil                           | 1 horse box          |
| March 31                       | 1,699 of May 19       | Nawab ...        | do. ...       | Colombo                       | 1 case               |
| Do. 31                         | 1,700 of May 19       | do. ...          | do. ...       | Trincomalee                   | 1 case               |
| Do. 31                         | 1,701 of May 19       | do. ...          | do. ...       | G G                           | 1 case               |
| May 14                         | 1,168 of June 17      | Nubia ...        | London ...    | C Bayley                      | 1 parcel             |
| June 20                        | 575 of August 9       | M. Maru ...      | Calcutta ...  | Nil                           | 1 horse box          |
| July 9                         | 159 of August 3       | Oriental ...     | London ...    | C Bayley                      | 1 parcel             |
| August 3                       | 2,754 of September 28 | Matiana ...      | Calcutta ...  | Nil                           | 1 package            |
| Do. 15                         | 1,696 of August 28    | Malta ...        | London ...    | V S C Pulle                   | 1 package            |
| Do. 15                         | 3,007 of September 30 | Sirdhana ...     | Calcutta ...  | C C L in a triangle           | 4 cases              |
| Do. 22                         | 1,698 of September 19 | Ugina ...        | do. ...       | J. Ratilal & Co               | 1 case               |
| Do. 31                         | 1,504 of October 16   | India ...        | do. ...       | Various                       | 2 bags rice          |
| Do. 31                         | 2,750 of October 26   | do. ...          | do. ...       | Nil                           | 3 cases              |
| September 13                   | 2 of September 11     | Khandalla ...    | do. ...       | Nil                           | 1 bag rice           |
| Do. 21                         | 3 of September 11     | do. ...          | do. ...       | Various                       | 4 bags grain         |
| Do. 27                         | 868 of October 13     | Ceylon ...       | London ...    | J J V & Co                    | 1 case               |
| <b>1899.</b>                   |                       |                  |               |                               |                      |
| <b>G WAREHOUSE.</b>            |                       |                  |               |                               |                      |
| May 11                         | —                     | Sunda ...        | London ...    | Nil                           | 11 earthenware pipes |
| June 21                        | —                     | Palawan ...      | do. ...       | Venista                       | 1 case tea lead      |
| July 28                        | —                     | Hiroshima Maru   | Japan ...     | Various                       | 3 bundles tea shooks |
| August 4                       | —                     | Glenarchy ...    | Singapore...  | Nil                           | 1 lot timber         |
| September 17                   | —                     | Shropshire ...   | Liverpool ... | A B                           | 1 case potatoes      |
| —                              | —                     | —                | —             | Nil                           | 1 bundle rattan      |
| —                              | —                     | —                | —             | Nil                           | 1 chair              |
| —                              | —                     | —                | —             | Nil                           | 4 bundles tea shooks |
| —                              | —                     | —                | —             | Nil                           | 3 casks, empty       |
| <b>1899.</b>                   |                       |                  |               |                               |                      |
| <b>H WAREHOUSE.</b>            |                       |                  |               |                               |                      |
| August 23                      | —                     | Kagoshima Maru   | Japan ...     | Nil                           | 1 lot rattan         |
| Do. 29                         | —                     | Duke of Fyfe ... | London ...    | O B E C in a diamond          | 1 chest tea shooks   |
| September 1                    | —                     | Tosa Maru ...    | Japan ...     | Various                       | 3 bundles tea shooks |
| <b>1899.</b>                   |                       |                  |               |                               |                      |
| <b>PARCEL WAREHOUSE.</b>       |                       |                  |               |                               |                      |
| July 2                         | —                     | Matiana ...      | London ...    | W J L in a diamond            | 1 drum, empty        |
| August 31                      | —                     | Rewa ...         | do. ...       | R 11                          | 1 cask, empty        |
| September 27                   | —                     | Ceylon ...       | do. ...       | Nil                           | 1 case               |
| <b>SMALL IRON SHED.</b>        |                       |                  |               |                               |                      |
| September 1                    | —                     | Tosa Maru ...    | Japan ...     | Nil                           | 1 bundle tea shook   |
| <b>1898.</b>                   |                       |                  |               |                               |                      |
| <b>I WAREHOUSE.</b>            |                       |                  |               |                               |                      |
| December 13                    | —                     | Virawa ...       | Rangoon ...   | B B T C L or Nil              | 124 pieces staves    |
| <b>1899.</b>                   |                       |                  |               |                               |                      |
| August 21                      | —                     | Byculla ...      | do. ...       | S C                           | 1 bag beans          |
| Do. 31                         | —                     | India ...        | Calcutta ...  | Nil                           | 6 tiles              |
| <b>1899.</b>                   |                       |                  |               |                               |                      |
| <b>J WAREHOUSE.</b>            |                       |                  |               |                               |                      |
| August 3                       | —                     | Matiana ...      | Calcutta ...  | A R E in a triangle,<br>Galle | 1 case               |
| Do. 12                         | —                     | Muttra ...       | do. ...       | Nil                           | 2 bars angle iron    |
| <b>1899.</b>                   |                       |                  |               |                               |                      |
| <b>K WAREHOUSE.</b>            |                       |                  |               |                               |                      |
| September 18                   | —                     | Nuddea ...       | Rangoon ...   | B B T C L or Nil              | 16 pieces staves     |

Total Quantities of the following Articles Exported from the Ports of Colombo and Galle during the under-mentioned periods.

| Vessels.          | Date of Clearing. | For what Port. | Plantation Coffee. | Native Coffee. | Ten.   | Cacao. | Trunk Cinchona. | Branch Cinchona. | Cinchona Chips. | Cocoanuts. | Copperash. | Cocount Oil. | Cocount Foodac. | Cinnamon. | Cinnamon Oil. | Citronella Oil. | Garda-moms. | Ebony. | Pum-bago. | Coir Rope. | Coir Junk. | Coir Yarn. | Coir Fibre. | Sapara-wood. | Orchilla. | Kitool Fibre. | Deer Horns. |
|-------------------|-------------------|----------------|--------------------|----------------|--------|--------|-----------------|------------------|-----------------|------------|------------|--------------|-----------------|-----------|---------------|-----------------|-------------|--------|-----------|------------|------------|------------|-------------|--------------|-----------|---------------|-------------|
|                   |                   |                | cwt.               | cwt.           | lb.    | cwt.   | lb.             | lb.              | lb.             | No.        | cwt.       | cwt.         | cwt.            | lb.       | oz.           | oz.             | lb.         | cwt.   | cwt.      | cwt.       | cwt.       | cwt.       | cwt.        | cwt.         | lb.       | cwt.          | cwt.        |
| <b>COLOMBO.</b>   | 1900              |                |                    |                |        |        |                 |                  |                 |            |            |              |                 |           |               |                 |             |        |           |            |            |            |             |              |           |               |             |
| ss. Chodoc        | 9-1               | Marseilles     |                    |                | 900415 | 65     |                 |                  |                 | 15000      | 500        | 4016         |                 |           |               |                 |             |        | 205       |            |            |            |             |              |           |               |             |
| ss. Matania       | 11-1              | London         |                    |                | 874806 |        |                 |                  |                 |            |            |              |                 |           |               |                 |             |        |           |            |            |            | 118         |              |           |               |             |
| ss. Lancashire    | 12-1              | do.            |                    |                | 1500   |        |                 |                  |                 |            |            |              |                 |           |               |                 |             |        |           |            |            |            |             |              |           |               |             |
| ss. Shropshire    | 12-1              | Rangoon        |                    |                | 459418 |        |                 |                  |                 |            |            |              |                 |           |               |                 |             |        |           |            |            |            |             |              |           |               |             |
| ss. Clan Macaulay | 13-1              | London         |                    |                | 202340 |        |                 |                  |                 | 28200      | 2095       | 2932         |                 |           |               |                 |             |        | 1052      |            |            |            |             |              |           |               |             |
| ss. Rome          | 13-1              | Australia      |                    |                | 187307 | 452    |                 |                  |                 |            |            |              |                 |           |               |                 |             |        |           |            |            |            |             |              |           |               |             |
| ss. Clan MacLean  | 13-1              | London         |                    | 84             | 106118 | 183    |                 |                  |                 |            |            |              |                 |           |               |                 |             |        |           |            |            |            |             |              |           |               |             |
| ss. Omrah         | 13-1              | do.            |                    |                | 390    |        |                 |                  |                 |            |            |              |                 |           |               |                 |             |        |           |            |            |            |             |              |           |               |             |
| ss. Armand Behic  | 13-1              | Marseilles     |                    |                |        |        |                 |                  |                 |            |            |              |                 |           |               |                 |             |        |           |            |            |            |             |              |           |               |             |
| ss. Sydney        | 13-1              | do.            |                    |                |        |        |                 |                  |                 |            |            |              |                 |           |               |                 |             |        |           |            |            |            |             |              |           |               |             |
| ss. Summerfeld    | 13-1              | Hamburg        |                    |                | 5600   |        |                 |                  |                 | 16000      | 625        | 197          | 2607            | 572*      | 1500†         | 4480            | 700         |        |           |            |            |            |             |              |           |               |             |
| ss. Clan MacLaren | 13-1              | London         |                    |                | 78906  |        |                 |                  |                 |            |            |              |                 |           |               |                 |             |        |           |            |            |            |             |              |           |               |             |
| ss. Fazalka       | 13-1              | Bombay         |                    |                | 3078   |        |                 |                  |                 |            |            |              |                 |           |               |                 |             |        |           |            |            |            |             |              |           |               |             |
| ss. Umta          | 13-1              | do.            |                    |                | 2592   |        |                 |                  |                 |            |            |              |                 |           |               |                 |             |        |           |            |            |            |             |              |           |               |             |
| <b>GALLE.</b>     | 1900              |                |                    |                |        |        |                 |                  |                 |            |            |              |                 |           |               |                 |             |        |           |            |            |            |             |              |           |               |             |
| ss. Kohinur       | 12-1              | Calcutta       |                    |                |        |        |                 |                  |                 |            |            | 560          |                 |           |               |                 |             |        |           |            |            |            |             |              |           |               |             |

\* And Chips 41,532 lb. † Leaf.

Importation of Rice from Indian Ports during the Week.

| TO COLOMBO :-         | TO GALLE :-          |
|-----------------------|----------------------|
| From Bombay           | From Calcutta        |
| " Madras              | " Southern India     |
| " Calcutta            | " "                  |
| " Southern India      | " "                  |
| Total                 | Total                |
| ... Bags 42           | ... Bags 8,115       |
| ... " 66              | ... " 530            |
| ... " 28,002          | ... " "              |
| ... " 18,588          | ... " "              |
| Total ... Bags 41,698 | Total ... Bags 8,645 |

H. M. Customs,  
Colombo, January 13, 1900.

W. H. JACKSON,  
for Principal Collector.