

Ceylon Government Gazette

Published by Authority.

No. 5,714—FRIDAY, AUGUST 24, 1900.

PART I.—General: Minutes, Proclamations, Appointments,
and General Government Notifications.

PART II.—Legal and Judicial.

PART III.—Provincial Administration.

PART IV.—Marine and Mercantile.

PART V.—Municipal and Local.

Separate paging is given to each Part in order that it may be filed separately.

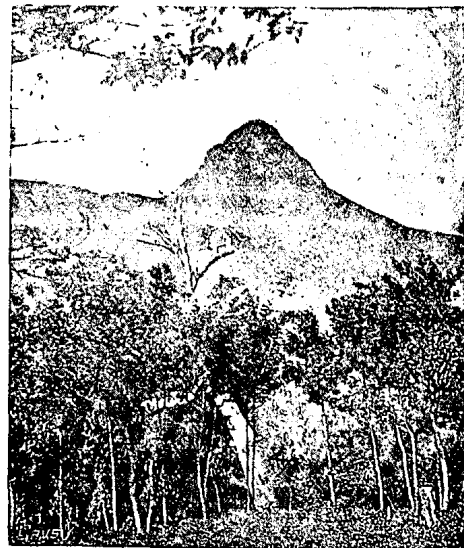
Part IV.—Marine and Mercantile.

	PAGE		PAGE
Notices to Mariners	... 159	Railway Traffic Returns	... 162
Notifications of Quarantine	... —	Trade Marks Notifications	... 157
Returns of Imports, Exports, and Bonded Goods	... 161		

TRADE MARKS NOTIFICATIONS.

IN compliance with the provisions of "The Trade Marks Ordinances, 1888 and 1890," and the Regulations made on March 28, 1889, notice is hereby given that Messrs. H. W. Cave & Co. have applied for the registration of the following Trade Mark in respect of Tea in the name of Mr. Alexander Orchard in Class 42 in the Classification of Goods in the above-mentioned Regulations:—

TRADE
MARK.



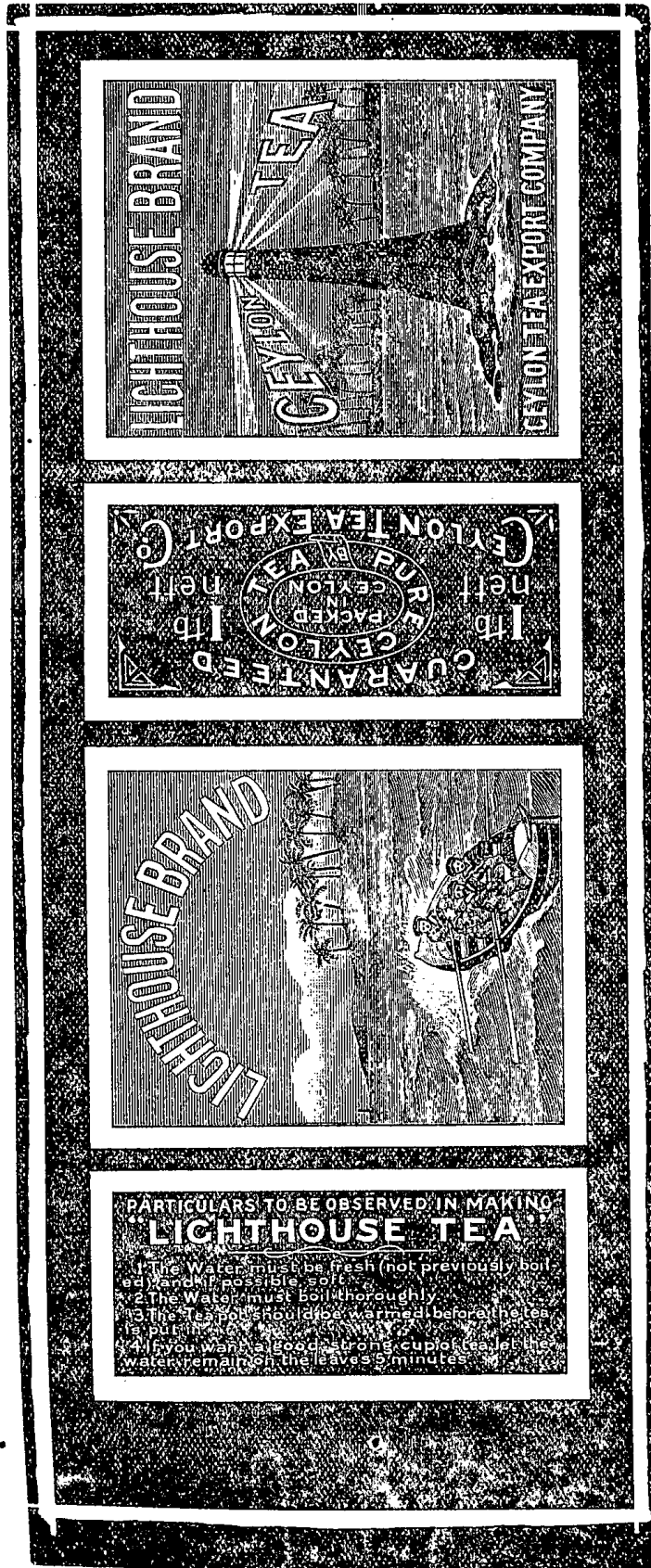
MOUNTAIN
BRAND.

Colonial Secretary's Office,
Colombo, August 22, 1900.

W. T. TAYLOR,
Acting Colonial Secretary.

N.B.—The essential particulars of the Trade Mark are the words "Mountain Brand," to which words the applicant claim the exclusive use.

IN compliance with the provisions of "The Trade Marks Ordinances, 1888 and 1890," and the Regulations made on March 28, 1889, notice is hereby given that Messrs. Tarrant, Henderson & Co., Colombo, Ceylon, have applied for the registration of the following Trade Mark in respect of Tea in Class 42 in the Classification of Goods in the above-mentioned Regulations :—



Colonial Secretary's Office,
Colombo, August 22, 1900.

W. T. TAYLOR,
Acting Colonial Secretary.

N.B.—The essential particulars of the Trade Mark are the distinctive device as above and the words "Ceylon Tea," "Lighthouse Brand," and the applicants disclaim any right to the exclusive use of the added matter.

IN compliance with the provisions of "The Trade Marks Ordinances, 1888 and 1890," and the Regulations made on March 28, 1889, notice is hereby given that Messrs. Van Cuylenburg and De Fry have applied for the registration of the following Trade Mark in respect of Chemical Substances used for agricultural and horticultural purposes in the name of Thomaspfahstoffabriken Gesellschaft mit beschränkter Haftung, of 17, Karlsbad, Berlin, in Class 2 in the Classification of Goods in the above-mentioned Regulations:—



Colonial Secretary's Office,
Colombo, August 22, 1900.

W. T. TAYLOR,
Acting Colonial Secretary.

N.B.—The applicants claim the right to use the above Trade Mark in all colours or any combination of, colours and in all sizes.

NOTICES TO MARINERS.

HIS EXCELLENCY THE GOVERNOR has been pleased to direct that the following Notices to Mariners be published for general information.

By His Excellency's command,
W. T. TAYLOR,
Acting Colonial Secretary.

Colonial Secretary's Office,
Colombo, August 22, 1900.

BENGAL.—No. 187.

*Australia—Queensland—Cooktown approach—
Lark Pass—Beacons re-erected on Marx and
Swinger Reefs.*

With reference to Notice to Mariners No. 11, dated January 12 last, issued by this office, the British Admiralty has given further notice (No. 398 of 1900) that the beacons on Marx reef (red) and on Swinger reef (red and black) have been re-erected; they have therefore been re-inserted on the Charts in their original positions.

Approximate position, Marx reef: lat. 15° 12' S., long. 145° 37' E.

Approximate position, Swinger reef: lat. 15° 14½' S., long. 145° 32' E.

This notice affects the following Admiralty Chart:—Hope Islands to Turtle group, No. 2,923; also Australia Directory, vol. II., 1898, p. 376.

E. J. BEAUMONT, Comdr., R.I.M.,
Officiating Port Officer of Calcutta.
Calcutta, August 3, 1900.

BENGAL.—No. 188.

China—Min river—Rocky Point—Beacon erected.

The British Admiralty has given notice (No. 399 of 1900) that a red spar beacon, surmounted by a cage about 13 ft. above high water, on which the

words, "Rocky point" are painted, has been erected about 30 yards from the outer extremity of a ledge of rocks about half way between Tunui and Tintao, river Min; it is situated with Half Tide beacon bearing N. 72° E., distant 8 cables, and Kaului head S. 25° E.

Approximate position: lat. 26° 5' 30" N., long. 119° 31' 30" E. (Notice No. 399 of 1900.)

This notice affects the following Admiralty Chart:—River Min, No. 2,400; also China Sea Directory, vol. III, 1894, page 285; and Supplement, 1898, relating to that work, page 23.

E. J. BEAUMONT, Comdr., R.I.M.,
Officiating Port Officer of Calcutta.

Calcutta, August 3, 1900.

BENGAL.—189.

*Africa, South—Cape Colony—Simons Bay—
Rambler Rock—Particulars and Position.*

The British Admiralty has given notice (No. 401 of 1900) of the existence of a rocky patch, named Rambler rock, with a depth of 27 ft. over it, situated with Roman rocks lighthouse bearing N. 31° W., distant 2½ cables, and Noah's Ark S. 77° E. (Notice No. 401 of 1900.)

Approximate position: lat. 34° 11' 0" S., long. 18° 27' 55" E.

Variation, 29° westerly in 1900.

This notice affects the following Admiralty Charts:—Table Bay to Cape Agulhas, No. 2,082; Cape of Good Hope, &c., No. 636; Simons Bay, No. 1,849; also Africa Pilot, part II, 1893, p. 385, part III., 1897, p. 73.

E. J. BEAUMONT, Comdr., R.I.M.,
Officiating Port Officer of Calcutta.
Calcutta, August 3, 1900.

BENGAL.—No. 190.

Pacific Ocean—The Philippines—Luzon, South Coast—Marinduque Island—Shoal on West Coast.

The British Admiralty has given notice (No. 410 of 1900) that a shoal of $4\frac{1}{2}$ fathoms is reported to exist where the Charts show a depth of 46 fathoms, northward of the river Buak, Marinduque Island.

Approximate position: lat. $13^{\circ} 28' N.$, long. $121^{\circ} 49' E.$

The depth of 46 fathoms has therefore been replaced on the Charts by a shoal of $4\frac{1}{2}$ fathoms. (Notice No. 410 of 1900.)

This notice affects the following Admiralty Charts:—China Sea, No. 2,661*b*; Philippine Islands, No. 943; St. Bernardino and Mindoro Strait, No. 2,577; also Eastern Archipelago, part I, 1890, p. 303.

E. J. BEAUMONT, Comdr., R.I.M.,
Officiating Port Officer of Calcutta.

Calcutta, August 3, 1900.

BENGAL.—No. 191.

Pacific Ocean—The Philippines—Panay—San Jose de Buenavista—Coral Reef off the South extreme.

The British Admiralty has given notice (No. 411 of 1900) that a coral reef, 20 yards in diameter and with a depth over it of 17 ft. at low water, is reported to exist three-quarters of a mile southward of the south extreme of the point on which San Jose de Buenavista is situated.

Approximate position: lat. $10^{\circ} 44' N.$, long. $121^{\circ} 54\frac{1}{2}' E.$

There is a depth of 7 fathoms inside and 9 fathoms outside the reef. (Notice No. 411 of 1900.)

This notice affects the following Admiralty Chart:—Sulu Sea, No. 2,578; also Eastern Archipelago, part I, 1890, p. 212.

E. J. BEAUMONT, Comdr., R.I.M.,
Officiating Port Officer of Calcutta.

Calcutta, August 3, 1900.

Total Quantities of the following Articles Exported from the Ports of Colombo and Galle during the under-mentioned periods.

Vessels.	Date of Clearing.	For what Port.	Plantation Coffee.	Native Coffee.	Tea.	Cacao.	Trunk Cinchona.	Branch Cinchona.	Cinchona Chips.	Cocoanuts.	Copperah.	Cocconut Oil.	Poonac.	Cinnamon.	Cinnamon Oil.	Citronella Oil.	Gardamoms.	Ibony.	Plumbago.	Coir Rope.	Coir Junk.	Coir Yarn.	Coir Fibre.	Sapan-wood.	Ochilla.	Kitool Fibre.	Deer Horns.	
COLOMBO.	1900.																											
ss. Annam	13-8	Singapore...																										
ss. Alicante	13-8	Singapore...																										
ss. Chusan	13-8	China			8000																							
ss. City of Dundee	13-8	London			501102																							
ss. Vindobona	13-8	Trieste			4954																							
ss. Ehrenfels	15-8	Calcutta								30900	3643																	
ss. Prinz Regent	15-8	Australia	32	50	26364							502																
ss. Luitpold	15-8	Bombay			30896									1120*									10					
ss. Bengal	15-8	Cape Ports																										
ss. Pongola	15-8	via Calcutta			1040																							
ss. China	16-5	China			4700																							
ss. Britannia	16-8	London			62864																							
ss. Valetta	16-8	Bombay			40878																							
ss. Clan Mepheron	18-8	London			95744																							
ss. Australia	18-8	Australia			373587	1																						
ss. Canton	18-8	London			376371	142																						
ss. Antenor	18-8	London			559695																							
ss. Dardanous	19-8	Liverpool								100210																		
										232220																		
GALLE.																												
ss. Maharani	16-8	Calcutta										466																

* Chips.

Importation of Rice from Indian and other Ports during the Week.

TO COLOMBO :-	TO GALLE :-
From Calcutta ...	Bags 13,984
Bombay ...	" " 25
Southern India ...	" " 5,941
Total ...	Bags 19,950

Nil.

H. M. Ousef, Colombo, August 20, 1900.

W. H. JACKSON, Acting Principal Collector.

Ceylon Government Railways—Comparative Statement of Traffic for the Month ended June 30, 1900.

Receipts from	Month ended June 30, 1898.			Month ended June 30, 1899.			Month ended June 30, 1900.			Increase—1900 over 1899.			Decrease—1900 below 1899.		
	No.	Rs.	c.	No.	Rs.	c.	No.	Rs.	c.	No.	Rs.	c.	No.	Rs.	c.
Passengers, Ordinary & Special	418,149	201,563	49	415,482	199,528	40	437,999	212,673	94	22,517	13,145	54	—	—	—
Coolies	24,784	15,556	83	6,266	4,103	42	44,019	32,267	40	37,753	28,163	98	—	—	—
Season Tickets	420	1,956	18	1,871	4,749	30	2,103	5,351	0	232	601	70	—	—	—
Total Passengers	443,353	219,076	50	423,619	208,381	12	484,121	250,292	34	60,502	41,911	22	—	—	—
Parcels	30,184	8,998	76	33,302	9,506	82	33,337	9,586	25	35	79	43	—	—	—
Horses	211	1,682	85	190	1,271	13	148	1,063	13	—	—	—	—	—	208
Carriages	54	727	11	41	544	68	50	614	85	9	70	17	—	—	—
Bicycles, &c.	570	383	58	599	396	19	635	385	40	36	—	—	—	—	10 79
Dogs	360	278	0	382	273	0	418	312	90	36	39	90	—	—	—
Other small Animals	19	24	90	38	51	32	28	29	78	—	—	—	—	—	21 54
Neat Cattle	3	65	10	3	24	67	8	77	32	5	52	65	—	—	—
Mails	—	4,260	60	—	4,509	20	—	4,525	54	—	16	34	—	—	—
Miscellaneous Coaching & Goods	—	1,709	42	—	1,661	43	—	1,915	85	—	254	42	—	—	—
Goods, Tons	37,461	377,780	23	39,937	385,644	15	41,492	433,107	90	1,555	47,463	75	—	—	—
Miscellaneous Goods	—	—	—	—	—	—	—	—	—	—	—	—	—	—	—
Live Stock	1,518	707	0	1,997	982	25	2,140	1,105	25	143	123	0	—	—	—
General Miscellaneous	—	4,343	96	—	3,013	52	—	7,306	36	—	4,292	84	—	—	—
Total for the Month	—	620,038	1	—	616,259	48	—	710,322	87	—	94,063	39	—	—	—
Brought forward from previous Return	—	3161707	47	—	3133691	71	—	3368397	50	—	234,705	79	—	—	—
Total from Jan. 1 to June 30	—	3781745	48	—	3749951	19	—	4078720	37	—	323,769	18	—	—	—
Corresponding period of previous Year	—	3655131	30	—	3781745	48	—	3749951	19	—	—	—	—	—	—
Increase	—	126,614	18	—	—	—	—	323,769	18	—	—	—	—	—	—
Decrease	—	—	—	—	31,794	29	—	—	—	—	—	—	—	—	—
Traffic Train Mileage for month	97,162	—	—	102,570	—	—	110,297	—	—	7,727	—	—	—	—	—
Brought forward from last Return	490,294	—	—	518,300	—	—	543,864	—	—	25,564	—	—	—	—	—
Total from Jan. 1 to June 30	587,456	—	—	620,870	—	—	654,161	—	—	33,291	—	—	—	—	—
Corresponding period of previous Year	595,003	—	—	587,456	—	—	620,870	—	—	—	—	—	—	—	—
Increase	—	—	—	33,414	—	—	33,291	—	—	—	—	—	—	—	—
Decrease	—	—	—	—	—	—	—	—	—	—	—	—	—	—	—

Particulars of Goods Conveyed.	Month ended June 30, 1900.				Jan. 1 to June 30, 1900.				Jan. 1 to June 30, 1899.				Increase in 1900.				Decrease in 1900.			
	Tons	cwt.	qr.	lb.	Tons	cwt.	qr.	lb.	Tons	cwt.	qr.	lb.	Tons	cwt.	qr.	lb.	Tons	cwt.	qr.	lb.
First class Goods	34	17	0	0	278	17	0	0	216	17	0	0	62	0	0	0	—	—	—	—
Kerosine Oil	126	10	0	0	700	10	0	0	732	10	0	0	—	—	—	—	32	0	0	0
Other 2nd class Goods	811	10	0	0	4,816	9	0	0	3,815	9	0	0	1,001	0	0	0	—	—	—	—
Rice	9,207	14	0	0	51,296	6	0	0	53,840	0	0	0	—	—	—	—	2,543	14	0	0
Arrack	243	18	0	0	1,239	12	0	0	1,049	9	0	0	190	3	0	0	—	—	—	—
Tea Leaf	94	12	0	0	455	9	0	0	531	19	0	0	—	—	—	—	76	10	0	0
Cinnamon	16	12	0	0	80	9	0	0	171	7	0	0	—	—	—	—	90	18	0	0
Cacao	80	13	0	0	742	17	0	0	1,375	17	0	0	—	—	—	—	633	0	0	0
Cardamoms	13	7	0	0	142	15	0	0	141	14	0	0	1	1	0	0	—	—	—	—
Salt	313	5	0	0	1,811	18	0	0	1,938	15	0	0	—	—	—	—	126	17	0	0
Tobacco	136	10	0	0	685	0	0	0	635	15	0	0	49	5	0	0	—	—	—	—
Beer, 3rd class	11	17	0	0	66	14	0	0	51	2	0	0	15	12	0	0	—	—	—	—
Tea packing, 3rd class	93	12	0	0	357	12	0	0	176	1	0	0	181	11	0	0	—	—	—	—
Manure, 3rd class	4	0	0	0	50	16	0	0	44	17	0	0	5	19	0	0	—	—	—	—
Plumbago, 3rd class	43	17	0	0	124	14	0	0	134	6	0	0	—	—	—	—	9	12	0	0
Other 3rd class Goods	4,221	13	0	0	24,381	7	0	0	24,341	9	0	0	519	18	0	0	—	—	—	—
Cinchona	5	5	0	0	98	5	0	0	113	6	0	0	—	—	—	—	15	1	0	0
Coffee	152	5	0	0	502	8	0	0	859	11	0	0	—	—	—	—	357	3	0	0
Cocoanuts	717	14	0	0	3,471	9	0	0	3,839	12	0	0	—	—	—	—	368	3	0	0
Cocunut Oil	234	3	0	0	1,527	19	0	0	1,204	19	0	0	323	0	0	0	—	—	—	—
Copperah	633	0	0	0	2,376	15	0	0	2,931	9	0	0	—	—	—	—	54	14	0	0
Cotton	47	4	0	0	82	11	0	0	4	18	0	0	77	13	0	0	—	—	—	—
Poonac	580	9	0	0	3,473	14	0	0	3,190	19	0	0	282	15	0	0	—	—	—	—
Staves	23	11	0	0	274	17	0	0	539	17	0	0	—	—	—	—	265	0	0	0
Tea	6,875	2	0	0	38,354	8	0	0	33,155	5	0	0	5199	3	0	0	—	—	—	—
Timber, Wrought	242	18	0	0	702	2	0	0	624	1	0	0	78	1	0	0	—	—	—	—
Other 4th class Goods	1,447	1	0	0	8,359	9	0	0	7,220	6	0	0	1,139	3	0	0	—	—	—	—
Timber at 5th class rate	385	17	0	0	1,611	9	0	0	1,121	14	0	0	489	15	0	0	—	—	—	—
Other 5th class Goods	850	7	0	0	5,374	14	0	0	5,272	9	0	0	102	5	0	0	—	—	—	—
Timber at 6th class rate	126	10	0	0	627	9	0	0	123	9	0	0	499	0	0	0	—	—	—	—
Tea Packing, 6th class	1,304	8	0	0	8,125	1	0	0	6,531	3	0	0	1,593	18	0	0	—	—	—	—
Manure, 6th class	1,554	14	0	0	7,632	17	0	0	4,345	11	0	0	3,287	6	0	0	—	—	—	—
Plumbago, 6th class	956	5	0	0	6,935	12	0	0	9,470	17	0	0	—	—	—	—	2,535	5	0	0
Beer, 6th class	—	—	—	—	—	—	—	—	—	—	—	—	—	—	—	—	—	—	—	—
Staves, 6th class	—	—	—	—	3	17	0	0	—	—	—	—	3	17	0	0	—	—	—	—
Other 6th class Goods	1,263	12	0	0	5,846	1	0	0	5,052	16	0	0	793	5	0	0	—	—	—	—
Bulky Articles and Road Metal	—	—	—	—	5	1	0	0	—	—	—	—	5	1	0	0	—	—	—	—
Railway Material	4,850	5	0	0	21,181	14	0	0	19,322	15	0	0	1,858	19	0	0	—	—	—	—
Breakwater Material	3,454	3	0	0	35,929	17	0	0	46,254	5	0	0	—	—	—	—	10324	8	0	0
Petroleum	298	17	0	0	1,610	1	0	0	1,433	6	0	0	176	15	0	0	—	—	—	—
Free Goods	5	10	0	0	112	19	0	0	260	1	0	0	—	—	—	—	147	2	0	0
Engineer, Ways and Works : Materials	—	—	—	—	—	—	—	—	—	—	—	—	—	—	—	—	—	—	—	—
Total	41,492	7	0	0	242,431	14	0	0	242,074	16	0	0	17,936	5	0					